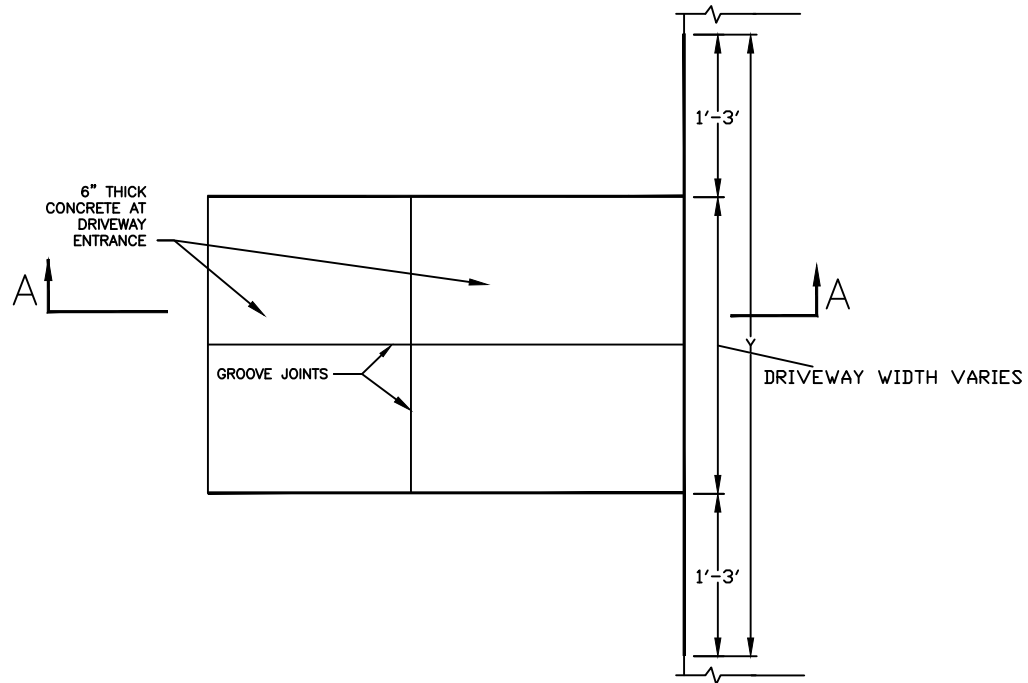


SECTION A-A

NOTES:

1. ALL CONCRETE TO BE MINIMUM NCDOT CLASS B, 6" MIN. THICKNESS.
2. ALL DRIVEWAYS MUST MEET THE CURRENT CITY DRIVEWAY REGULATIONS AND NCDOT REQUIREMENTS FOR SPACING, SIGHT DISTANCE AND OFFSETS FROM PROPERTY LINES AND INTERSECTIONS.
3. NO UTILITIES PERMITTED IN DRIVEWAYS.
4. NO DRIVEWAY SHALL BE WITHIN 5' (AS MEASURED ALONG STREET CURB STARTING AT THE DRIVEWAY RADIUS) OF ANY MUNICIPAL OR STATE OWNED FEATURE (I.E. CURB INLETS, FIRE HYDRANTS, UTILITY POLES OR SIMILAR STRUCTURES)
5. DRIVEWAY GRADES MAY BE CHANGED TO MEET FIELD CONDITIONS WITH THE APPROVAL OF THE CITY INSPECTOR.
6. THE DETAIL SHALL BE USED ONLY AT THE DIRECTION OF THE CITY INSPECTOR FOR INFILL LOTS.



PLAN

NOT TO SCALE