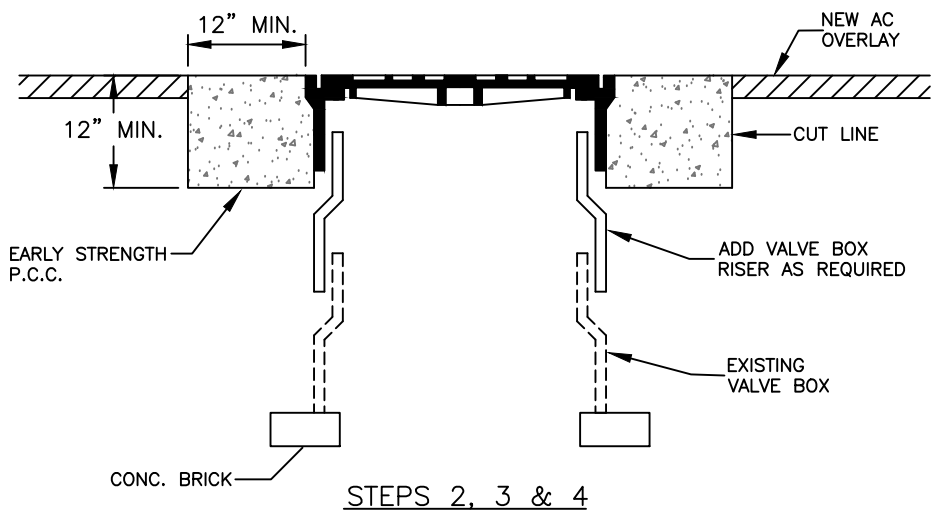
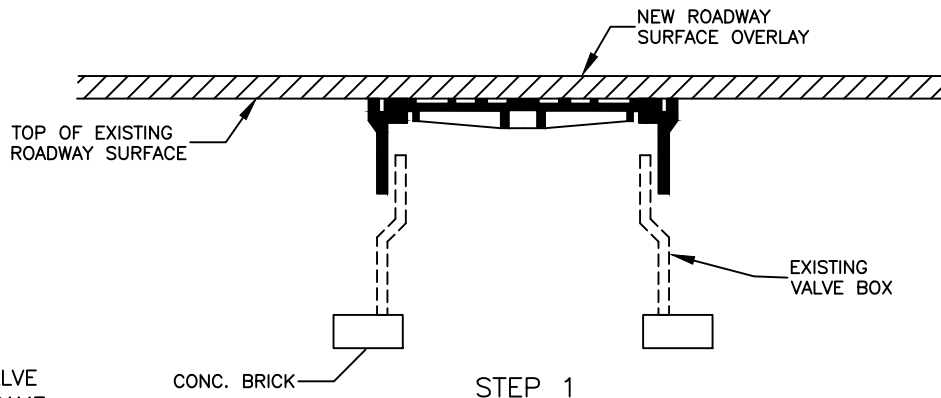


- STEP 1 COVER EXISTING VALVE BOX WITH APPROVED MATERIAL AND CONSTRUCT OVERLAY ACROSS TOP OF VALVE BOX.
- STEP 2 SAW CUT EXCAVATION AREA AROUND VALVE BOX 12" MINIMUM FROM VALVE BOX FRAME.
- STEP 3 RAISE VALVE BOX TO FINISH PAVEMENT PROFILE AND CROSS SLOPE.
- STEP 4 BACKFILL WITH EARLY STRENGTH PORTLAND CEMENT CONCRETE (P.C.C.) TO DEPTHS AS DIRECTED.



NOT TO SCALE



## VALVE BOX ADJUSTMENT DETAIL

SEPTEMBER 2022

332